

YOUR BEST THERMAL SOLUTIONS.

www.gulf.com.tw



GULF ELECTRICS was established in 1965 in Taiwan. Based on more than 50 years of experience in cooling industry, GULF has become the leader in manufacturing cooling fan & motor. With the commitment to our clients worldwide, we insist on not only every aspect of manufacturing, from material selection, analysis-based design, precise production, 100% quality control to customer-oriented service, but also through the continuous analysis and advanced technology to deliver product excellence.

Our wide product range includes AC/DC Axial fans and blowers, centrifugal fans, cross flow fans, outer rotor fans, thermal module and fan accessories, to provide you one-stop solution to fulfill all your cooling needs. All fans are made in Taiwan with high quality assurance and designed to meet UL, CE, RoHS and REACH requirements. Customization is also available including product specification and label & packaging design.

Our mission for the future is to continuously raise quality standard and keep optimizing product performance to **BE YOUR BEST THERMAL SOLUTIONS.**



AC Centrifugal Fans



AC Centrifugal Fan

Ø133mm

GC13380 AC

80mm thick



General Specifications

Material	Plastic Impeller
Bearings	Maintenance-Free Ball Bearings
Motor Type	AC Induction Capacitor
Connection	Lead wire
Dielectric Strength	1800 VAC for 1 Sec.
Insulation Resistance	100 MΩ min.@500VDC
Operating Temperature	-20°C to +70°C
Type of Protection	Insulation Class F
Safety	Thermally Protected (Auto Restart)



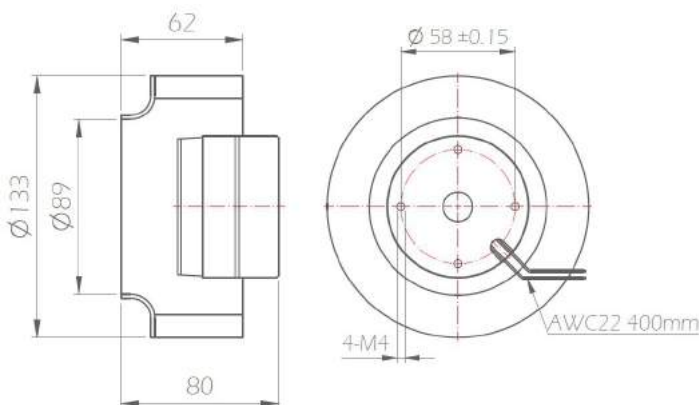
- Plastic Impeller
- Weight : 800 g
- Rohs Compliance

Ø133 x 80 mm ‹ Super Speed ›

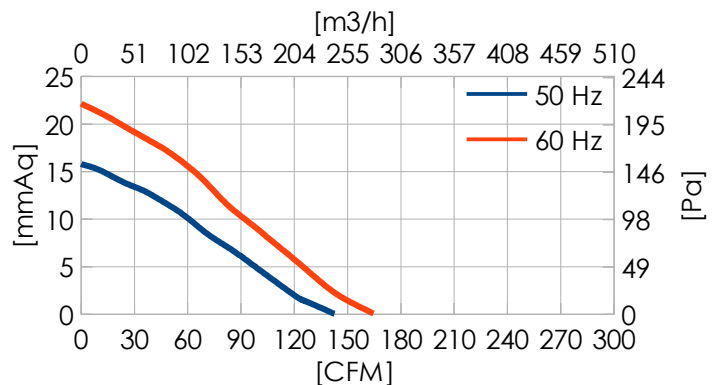
Specifications

Model No.	Voltage VAC	Freq Hz	Current A	Power W	Speed rpm	Pressure mmAq	Air Flow CFM	Noise dB	TUV	UL	CE
GC113380SBL-S	115	50/60	0.26/0.24	26/28	2800/3200	15/21	145/165	62/65			
GC213380SBL-S	230		0.10/0.12	23/27							

Dimensions (Unit : mm)



Air Flow and Static Pressure



GULF ELECTRICS CO., LTD

Latest Product Information: www.gulf.com.tw/en
+886-7-5219966 ; service@gulf.com.tw



AC Centrifugal Fan

Ø170mm

GC17065 AC

65mm thick



General Specifications

Material	Plastic Impeller
Bearings	Maintenance-Free Ball Bearings
Motor Type	AC Induction Capacitor
Connection	Lead wire
Dielectric Strength	1800 VAC for 1 Sec.
Insulation Resistance	100 MΩ min.@500VDC
Operating Temperature	-20°C to +70°C
Type of Protection	Insulation Class F
Safety	Thermally Protected (Auto Restart)



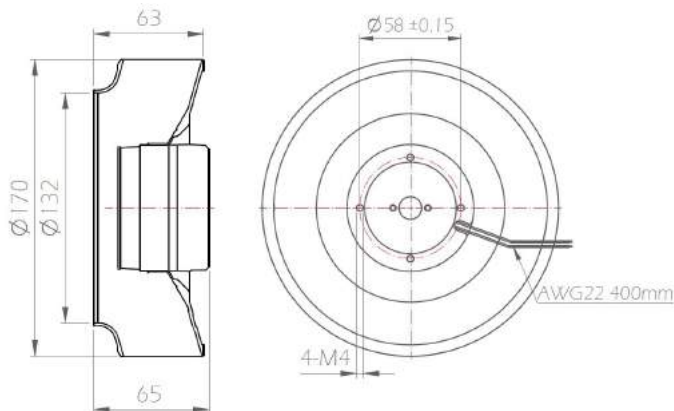
- Plastic Impeller
- Weight : 900 g
- Rohs Compliance

Ø170 x 65 mm ‹ High Speed ›

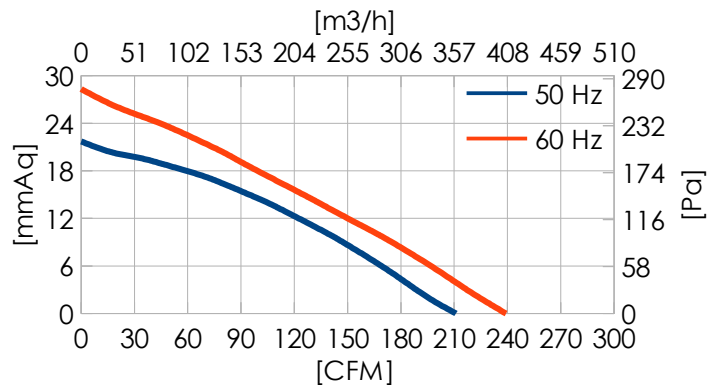
Specifications

Model No.	Voltage VAC	Freq Hz	Current A	Power W	Speed rpm	Pressure mmAq	Air Flow CFM	Noise dB	TUV	UL	CE
GC117065HBL-S	115	50/60	0.26/0.27	27/31	2750/3100	22/28	210/240	67/69			
GC217065HBL-S	230		0.10/0.13	24/30							

Dimensions (Unit : mm)



Air Flow and Static Pressure



GULF ELECTRICS CO., LTD

Latest Product Information: www.gulf.com.tw/en
+886-7-5219966 ; service@gulf.com.tw



AC Centrifugal Fan

Ø190mm

GC19067 AC

67mm thick



General Specifications

Material	Plastic Impeller
Bearings	Maintenance-Free Ball Bearings
Motor Type	AC Induction Capacitor
Connection	Lead wire
Dielectric Strength	1800 VAC for 1 Sec.
Insulation Resistance	100 MΩ min.@500VDC
Operating Temperature	-20°C to +70°C
Type of Protection	Insulation Class F
Safety	Thermally Protected (Auto Restart)



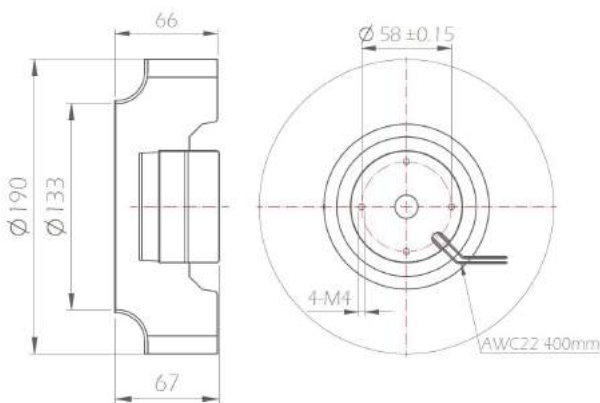
- Plastic Impeller
- Weight : 890 g
- Rohs Compliance

Ø190 x 67 mm ‹ Medium Speed ›

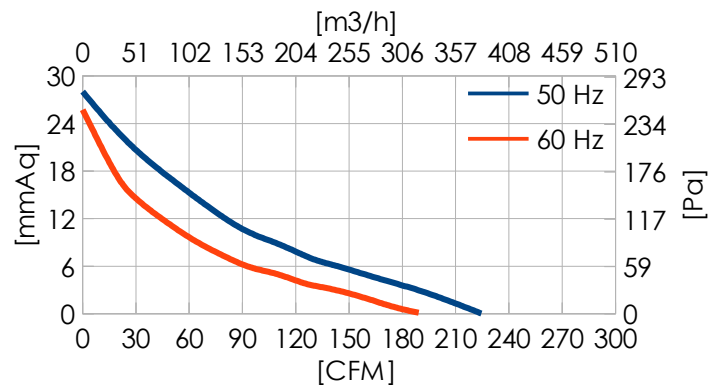
Specifications

Model No.	Voltage VAC	Freq Hz	Current A	Power W	Speed rpm	Pressure mmAq	Air Flow CFM	Noise dB	TUV	UL	CE
GC119067MBL-S	115	50/60	0.39/0.42	45/48	2000/1800	28/26	225/190	61/59			
GC219067MBL-S	230		0.17/0.19	39/44		28/28	230/200				

Dimensions (Unit : mm)



Air Flow and Static Pressure



AC Centrifugal Fan

Ø190mm

GC19072 AC

72mm thick



General Specifications

Material	Plastic Impeller
Bearings	Maintenance-Free Ball Bearings
Motor Type	AC Induction Capacitor
Connection	Lead wire
Dielectric Strength	1800 VAC for 1 Sec.
Insulation Resistance	100 MΩ min.@500VDC
Operating Temperature	-20°C to +70°C
Type of Protection	Insulation Class F
Safety	Thermally Protected (Auto Restart)



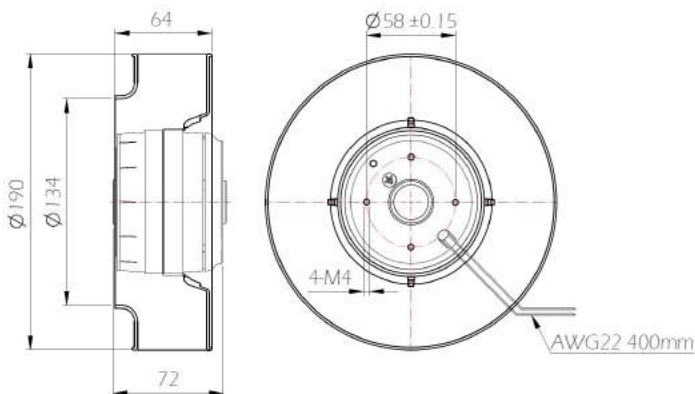
- Plastic Impeller
- Weight : 1820 g
- Rohs Compliance

Ø190 x 72 mm ‹ High Speed ›

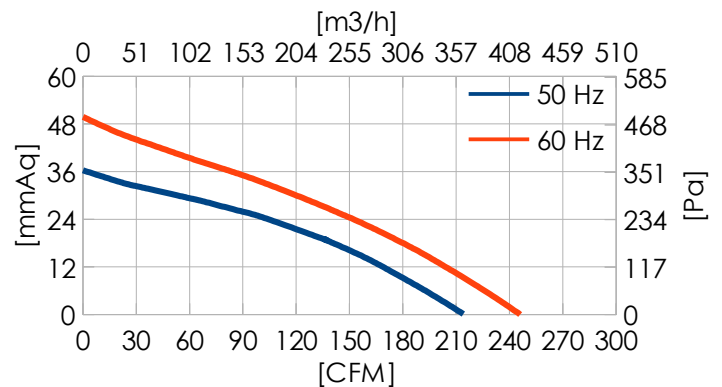
Specifications

Model No.	Voltage VAC	Freq Hz	Current A	Power W	Speed rpm	Pressure mmAq	Air Flow CFM	Noise dB	TUV	UL	CE
GC119072HBL-S	115	50/60	0.56/0.70	58/80	2700/3100	36/50	220/250	70/73	√	√	√
GC219072HBL-S	230		0.26/0.34	58/80					√	√	√

Dimensions (Unit : mm)



Air Flow and Static Pressure



GULF ELECTRICS CO., LTD

Latest Product Information: www.gulf.com.tw/en

+886-7-5219966 ; service@gulf.com.tw



AC Centrifugal Fan

Ø220mm

GC22076 AC

76mm thick



General Specifications

Material	Plastic Impeller
Bearings	Maintenance-Free Ball Bearings
Motor Type	AC Induction Capacitor
Connection	Lead wire
Dielectric Strength	1800 VAC for 1 Sec.
Insulation Resistance	100 MΩ min.@500VDC
Operating Temperature	-20°C to +70°C
Type of Protection	Insulation Class F
Safety	Thermally Protected (Auto Restart)



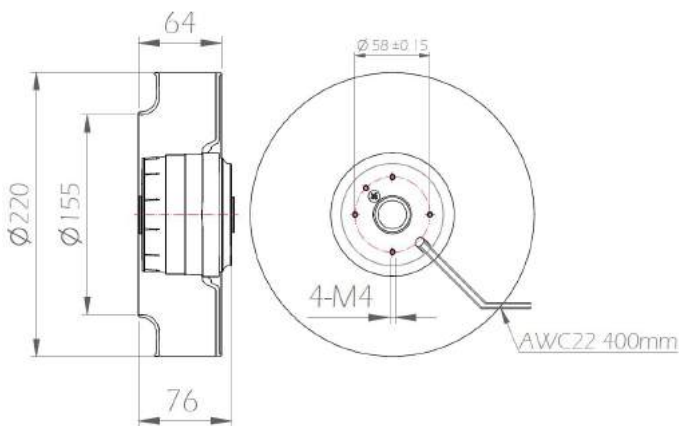
- Plastic Impeller
- Weight : 1980 g
- Rohs Compliance

Ø220 x 76 mm ‹ High Speed ›

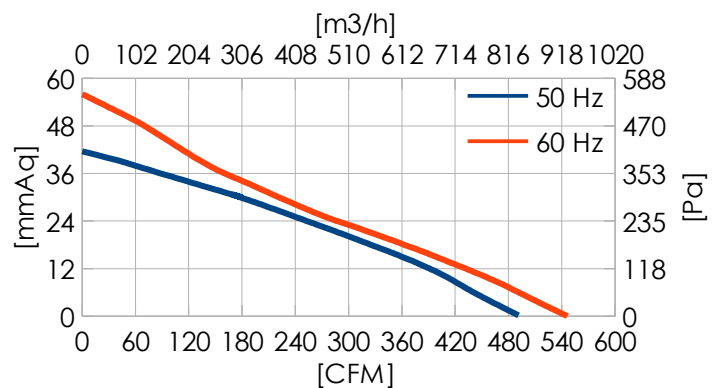
Specifications

Model No.	Voltage VAC	Freq Hz	Current A	Power W	Speed rpm	Pressure mmAq	Air Flow CFM	Noise dB	TUV	UL	CE
GC122076HBL-S	115	50/60	0.7/1.0	82/115	2650/2950	40/55	490/550	75/78			
GC222076HBL-S	230		0.35/0.5								

Dimensions (Unit : mm)



Air Flow and Static Pressure



GULF ELECTRICS CO., LTD

Latest Product Information: www.gulf.com.tw/en
+886-7-5219966 ; service@gulf.com.tw



AC Centrifugal Fan

ø225mm

GC22599 AC

99mm thick



- Plastic Impeller
- Weight : 1985 g
- Rohs Compliance

General Specifications [一般特性]

Material	Plastic Impeller	[塑膠葉片]
Bearings	Maintenance-Free Ball Bearings	[滾珠軸承]
Motor Type	AC Induction Capacitor	[電容式感應馬達]
Connection	Lead wire	[導線連接]
Dielectric Strength	1800 VAC for 1 Sec.	[耐壓規格]
Insulation Resistance	100 MΩ min.@500VDC	[絕緣阻抗]
Operating Temperature	-20°C to +70°C	[操作環溫]
Type of Protection	Insulation Class F	[線圈等級]
Ingress Protection	IP54	[防塵防水]
Safety	Thermally Protected (Auto Restart)	[溫度開關保護(可自動回復)]

ø225 x 99 mm

◁ High Speed ▷

◁ Low Speed ▷

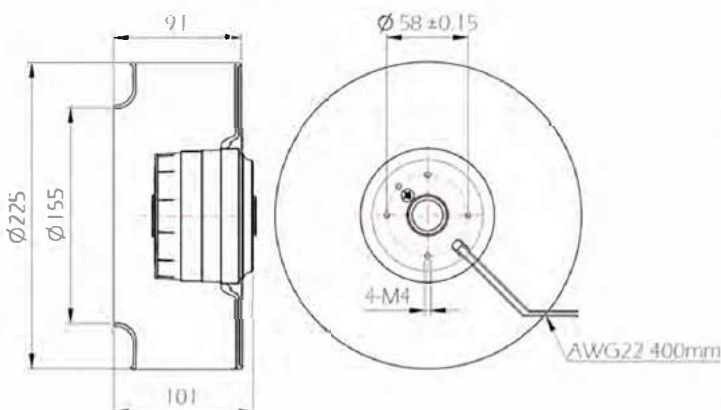
[高&低轉速]

Specifications [規格表]

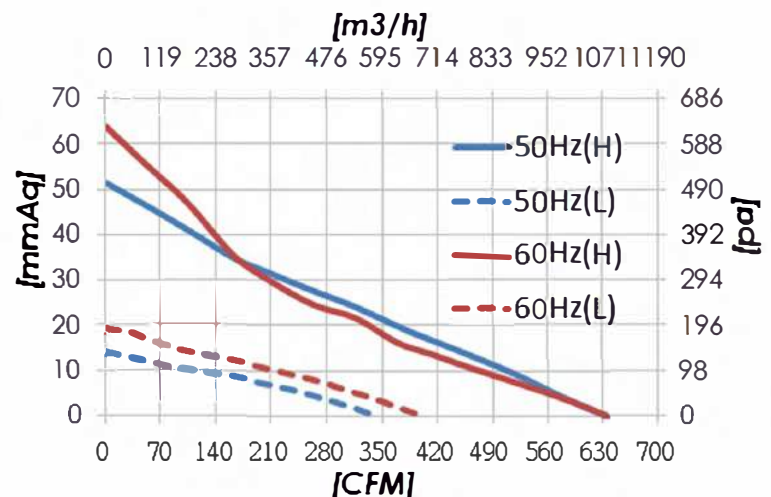
Model No. [型號]	Voltage [電壓] VAC	Freq [頻率] Hz	Current [電流] A	Power [功率] W	Speed [轉速] rpm	Pressure [靜壓] mmAq	Air Flow [風量] CFM	Noise [噪音] dB	Certification [安規認證]		
									TUV	UL	CE
GC122599HBL-S	115	50/60	0.93/1.30	109/145	2500/2500	52/64	636/635	70/72	√	√	
GC222599HBL-S	230		0.49/0.67								
GC122599LBL-S	115		0.39/0.39	40/45	1400/1600	14/20	347/405	59/61			
GC222599LBL-S	230		0.18/0.22	40/50							
GC322599HBL-S	380		0.32/0.43	122/163	2250/2750	46/70	595/726	68/74			
GC222599EBL-S	230		0.58/0.84	135/195	2650/2950	55/74	700/750	73/75			

*upgrade version

Dimensions (Unit : mm)



Air Flow and Static Pressure



AC Centrifugal Fan

Ø225mm

GC225101 AC

101mm thick



General Specifications

Material	Plastic Impeller
Bearings	Maintenance-Free Ball Bearings
Motor Type	AC Induction Capacitor
Connection	Lead wire
Dielectric Strength	1800 VAC for 1 Sec.
Insulation Resistance	100 MΩ min.@500VDC
Operating Temperature	-20°C to +70°C
Type of Protection	Insulation Class F
Safety	Thermally Protected (Auto Restart)



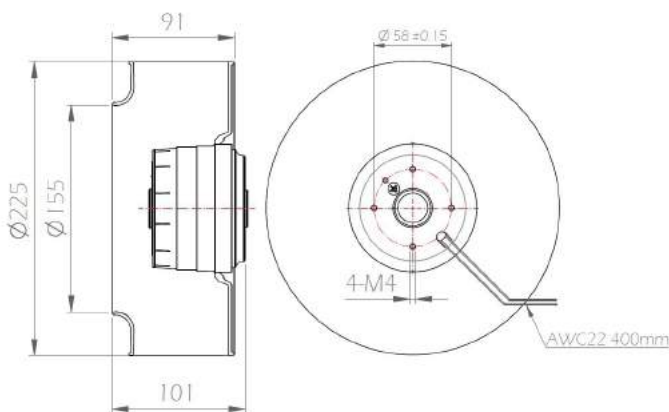
- Plastic Impeller
- Weight : 1985 g
- Rohs Compliance

Ø225 x 101 mm ‹ High Speed ›
‹ Low Speed ›

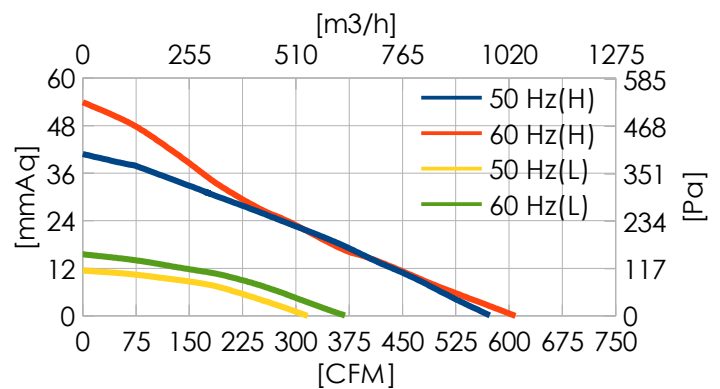
Specifications

Model No.	Voltage VAC	Freq Hz	Current A	Power W	Speed rpm	Pressure mmAq	Air Flow CFM	Noise dB	TUV	UL	CE
GC1225101HBL-S	115	50/60	0.93/1.30	109/145	2500/2650	41/54	530/560	72/74			
GC2225101HBL-S	230		0.49/0.67		2600/2700		573/610				
GC1125101LBL-S	115		0.32/0.40	36.5/47	1400/1700	11.5/15.5	320/370	58/59			
GC2225101LBL-S	230		0.16/0.20								

Dimensions (Unit : mm)



Air Flow and Static Pressure



GULF ELECTRICS CO., LTD

Latest Product Information: www.gulf.com.tw/en

+886-7-5219966 ; service@gulf.com.tw



AC Centrifugal Fan

Ø250mm

GC25094 AC

94mm thick



General Specifications

Material	Plastic Impeller
Bearings	Maintenance-Free Ball Bearings
Motor Type	AC Induction Capacitor
Connection	Lead wire
Dielectric Strength	1800 VAC for 1 Sec.
Insulation Resistance	100 MΩ min.@500VDC
Operating Temperature	-20°C to +70°C
Type of Protection	Insulation Class F
Safety	Thermally Protected (Auto Restart)



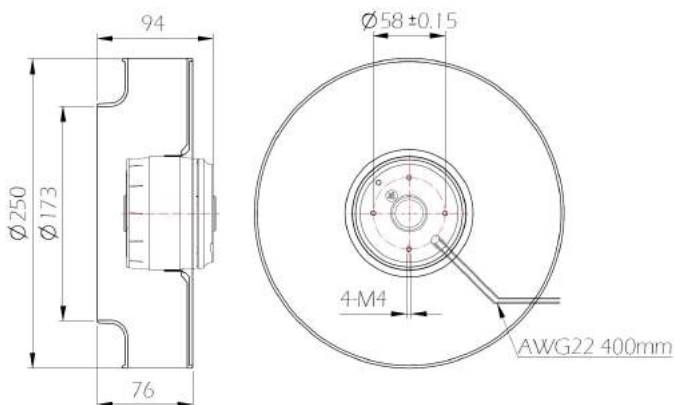
- Plastic Impeller
- Weight : 2090 g
- Rohs Compliance

Ø250 x 94 mm ‹ High Speed ›

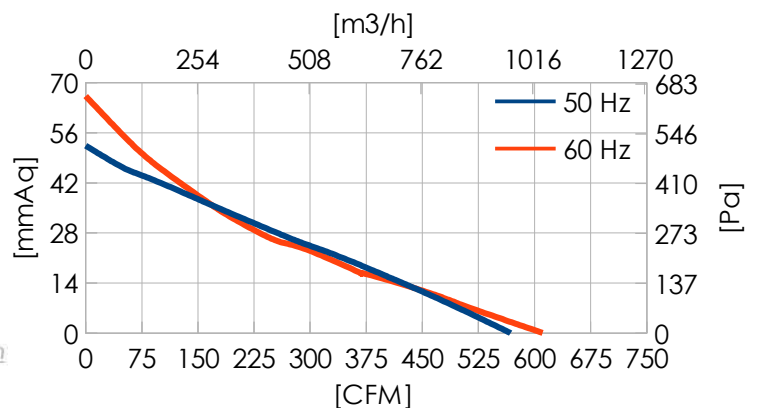
Specifications

Model No.	Voltage VAC	Freq Hz	Current A	Power W	Speed rpm	Pressure mmAq	Air Flow CFM	Noise dB	TUV	UL	CE
GC125094HBL-S	115	50/60	0.90/1.23	103/142	2600/2800	53/67	570/610	77.5/79	√	√	√
GC225094HBL-S	230		0.48/0.66	106/148							

Dimensions (Unit : mm)



Air Flow and Static Pressure



GULF ELECTRICS CO., LTD

Latest Product Information: www.gulf.com.tw/en
+886-7-5219966 ; service@gulf.com.tw



EC Backward Centrifugal Fans

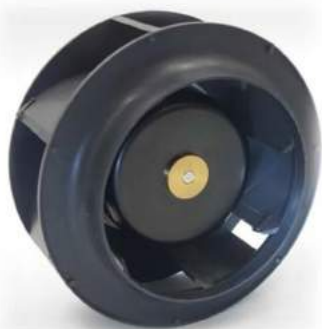
GULF ELECTRICS CO., LTD

Latest Product Information: www.gulf.com.tw/en
+886-7-5219966 ; service@gulf.com.tw



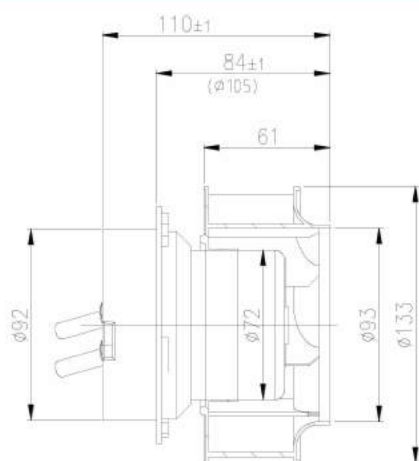
EC Centrifugal fans 離心扇

backward curved 後傾式, $\phi 133$

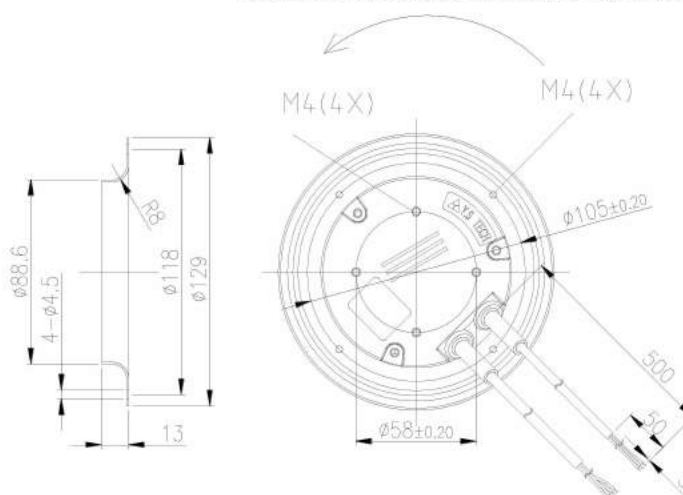


- **Material 材料:**
 Impeller 扇葉: Glass fiber-reinforced polypropylene 玻纖強化聚丙烯
 Electronics housing 後蓋: Die-casting aluminum 壓鑄鋁合金
 Motor shell 馬達殼: Steel, electro deposited black 電著黑鋼材
- **Direction of rotation 轉動方向:** CW view toward rotor 看自入風口為順時針
- **Number of blades 葉片數:** 7
- **Degree of protection 防水防塵等級:** IP65
- **Mode of operating 操作模式:** Continuous operation S1 連續操作 S1
- **Insulation class 絕緣等級:** B
- **Installation position 安裝方向:** Any 任何

Outline dimension 外觀尺寸



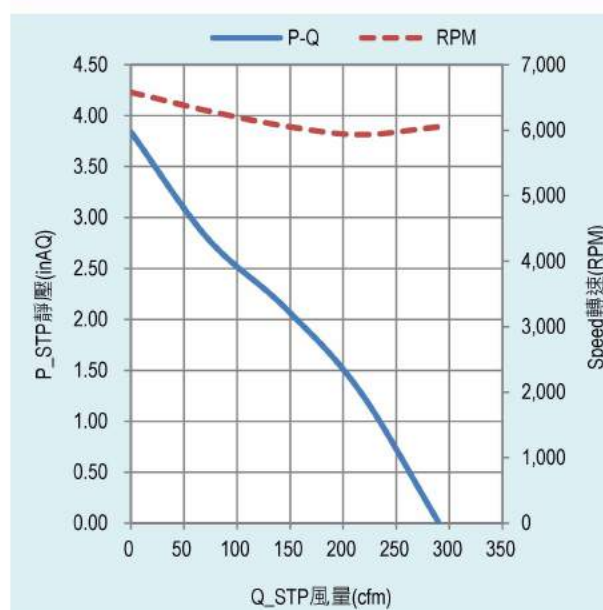
The fan air inlet guide entering depth is 2mm and illustrated in page 20
 於第 20 頁圖示入風圈進入扇葉入風口深度為 2mm



Technical parameters 規格參數

Model name 機型編碼	GE213341HBL-7A2
Rated voltage 額定電壓(VAC)	230
Frequency 交流電頻率(Hz)	50/60
Current 電流(A)	0.95
Speed 轉速(RPM)	6,040
Power 功耗(W)	108
Max. airflow 最大風量(cfm)	289
Max. airflow 最大風量(m ³ /h)	492
Max. static pressure 最大靜壓(inAQ)	3.84
Max. static pressure 最大靜壓(Pa)	960
Noise 噪音(dBA)	74.3
Operating temperature 操作溫度(°C)	-25~60
Weight 重量(g)	1,150
Connection diagram 接線示意	Type I

Performance curves 性能曲線



EC Centrifugal fans 離心扇

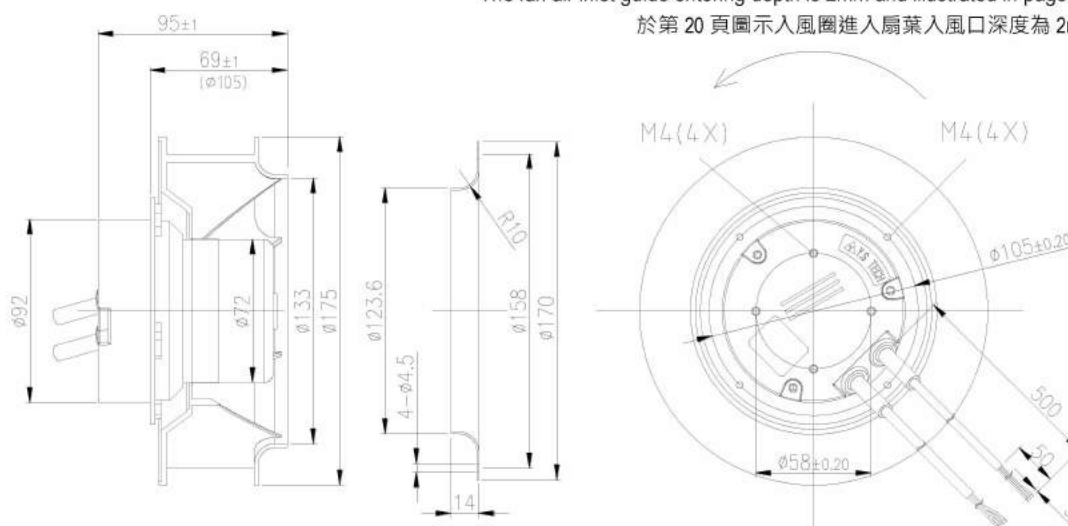
backward curved 後傾式, $\phi 175$



- **Material 材料:**
 Impeller 扇葉: Glass fiber-reinforced polypropylene 玻纖強化聚丙烯
 Electronics housing 後蓋: Die-casting aluminum 壓鑄鋁合金
 Motor shell 馬達殼: Steel, electro deposited black 電著黑鋼材
- **Direction of rotation 轉動方向:** CW view toward rotor 看自入風口為順時針
- **Number of blades 葉片數:** 7
- **Degree of protection 防水防塵等級:** IP65
- **Mode of operating 操作模式:** Continuous operation S1 連續操作 S1
- **Insulation class 絕緣等級:** B
- **Installation position 安裝方向:** Any 任何

Outline dimension 外觀尺寸

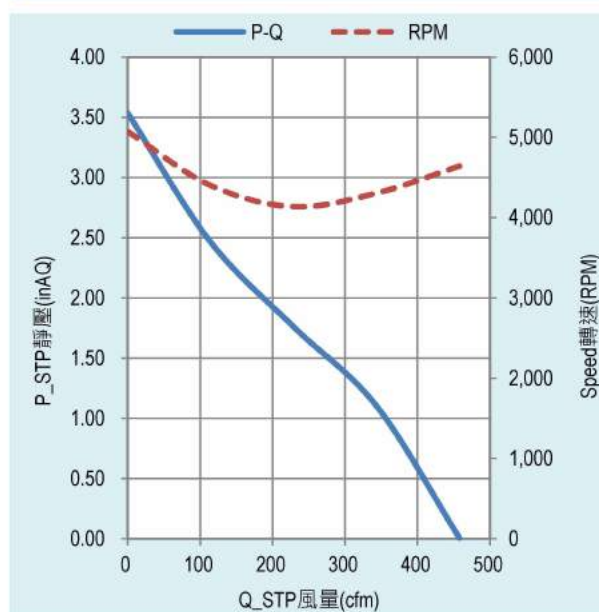
The fan air inlet guide entering depth is 2mm and illustrated in page 20
 於第 20 頁圖示入風圈進入扇葉入風口深度為 2mm



Technical parameters 規格參數

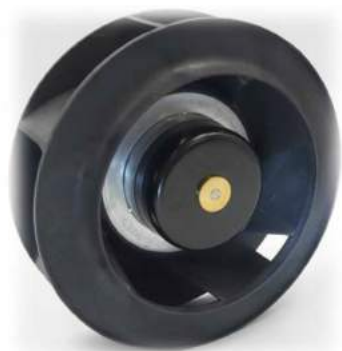
Model name 機型編碼	GE217542HBL-7A2
Rated voltage 額定電壓(VAC)	230
Frequency 交流電頻率(Hz)	50/60
Current 電流(A)	0.95
Speed 轉速(RPM)	4,640
Power 功耗(W)	110
Max. airflow 最大風量(cfm)	458
Max. airflow 最大風量(m ³ /h)	779
Max. static pressure 最大靜壓(inAQ)	3.54
Max. static pressure 最大靜壓(Pa)	884
Noise 噪音(dBA)	75.2
Operating temperature 操作溫度(°C)	-25~60
Weight 重量(g)	1,218
Connection diagram 接線示意	Type I

Performance curves 性能曲線



EC Centrifugal fans 離心扇

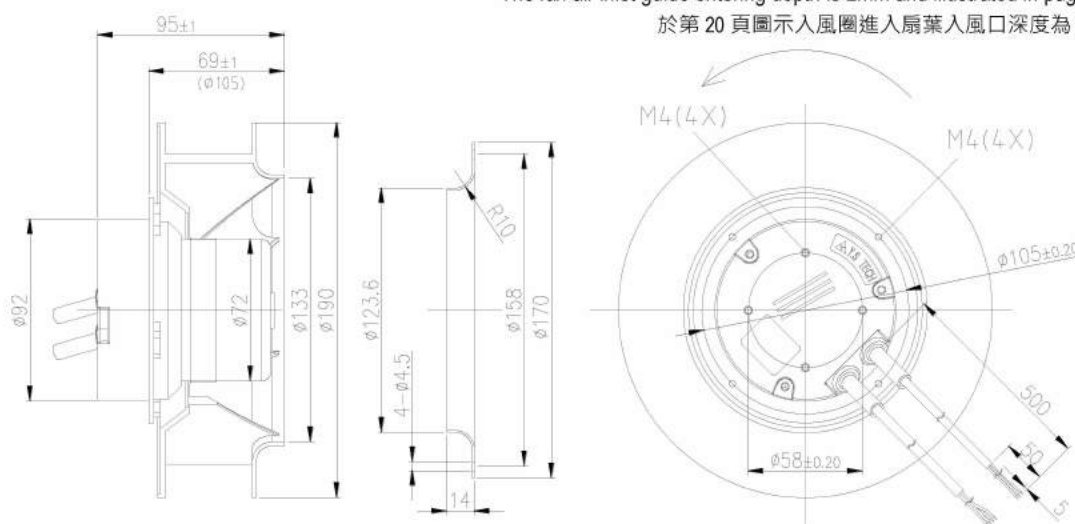
backward curved 後傾式, $\phi 190$



- **Material 材料:**
 Impeller 扇葉: Glass fiber-reinforced polypropylene 玻纖強化聚丙烯
 Electronics housing 後蓋: Die-casting aluminum 壓鑄鋁合金
 Motor shell 馬達殼: Steel, electro deposited black 電著黑鋼材
- **Direction of rotation 轉動方向:** CW view toward rotor 看自入風口為順時針
- **Number of blades 葉片數:** 7
- **Degree of protection 防水防塵等級:** IP65
- **Mode of operating 操作模式:** Continuous operation S1 連續操作 S1
- **Insulation class 絕緣等級:** B
- **Installation position 安裝方向:** Any 任何

Outline dimension 外觀尺寸

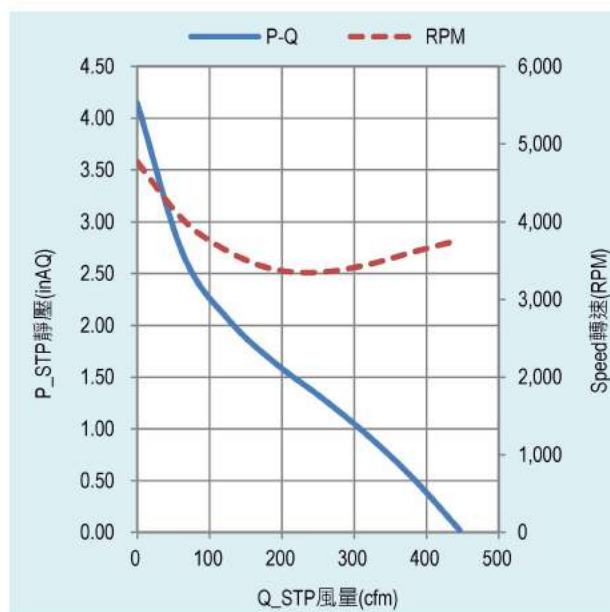
The fan air inlet guide entering depth is 2mm and illustrated in page 20
 於第 20 頁圖示入風圈進入扇葉入風口深度為 2mm



Technical parameters 規格參數

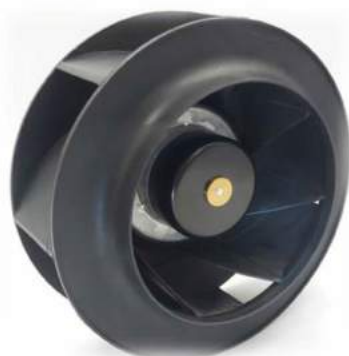
Model name 機型編碼	GE219045HBL-7A2
Rated voltage 額定電壓(VAC)	230
Frequency 交流電頻率(Hz)	50/60
Current 電流(A)	0.91
Speed 轉速(RPM)	3,770
Power 功耗(W)	106
Max. airflow 最大風量(cfm)	446
Max. airflow 最大風量(m ³ /h)	759
Max. static pressure 最大靜壓(inAQ)	4.15
Max. static pressure 最大靜壓(Pa)	1,037
Noise 噪音(dBA)	72.3
Operating temperature 操作溫度(°C)	-25~60
Weight 重量(g)	1,268
Connection diagram 接線示意	Type I

Performance curves 性能曲線



EC Centrifugal fans 離心扇

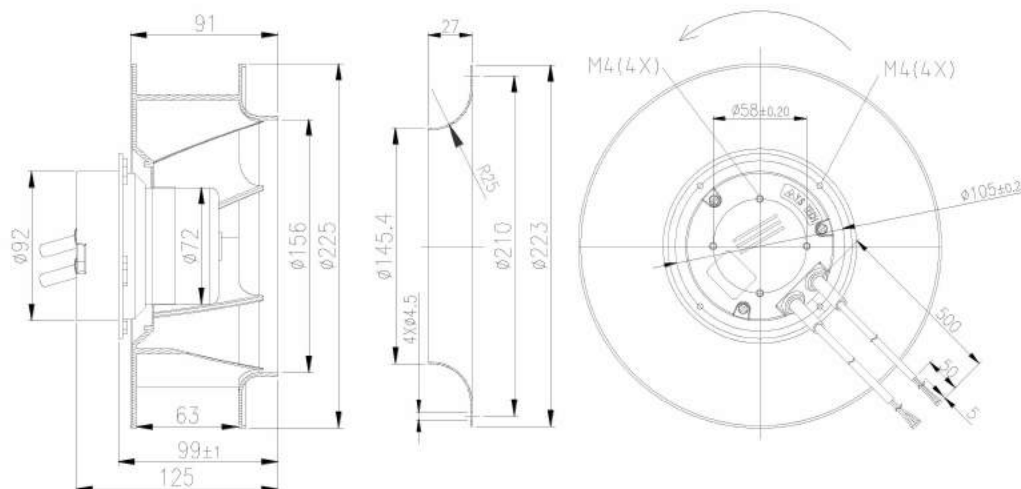
backward curved 後傾式, $\phi 225$



- **Material 材料:**
 Impeller 扇葉: Glass fiber-reinforced polypropylene 玻纖強化聚丙烯
 Electronics housing 後蓋: Die-casting aluminum 壓鑄鋁合金
 Motor shell 馬達殼: Steel, electro deposited black 電著黑鋼材
- **Direction of rotation 轉動方向:** CW view toward rotor 看自入風口為順時針
- **Number of blades 葉片數:** 7
- **Degree of protection 防水防塵等級:** IP65
- **Mode of operating 操作模式:** Continuous operation S1 連續操作 S1
- **Insulation class 絕緣等級:** B
- **Installation position 安裝方向:** Any 任何

Outline dimension 外觀尺寸

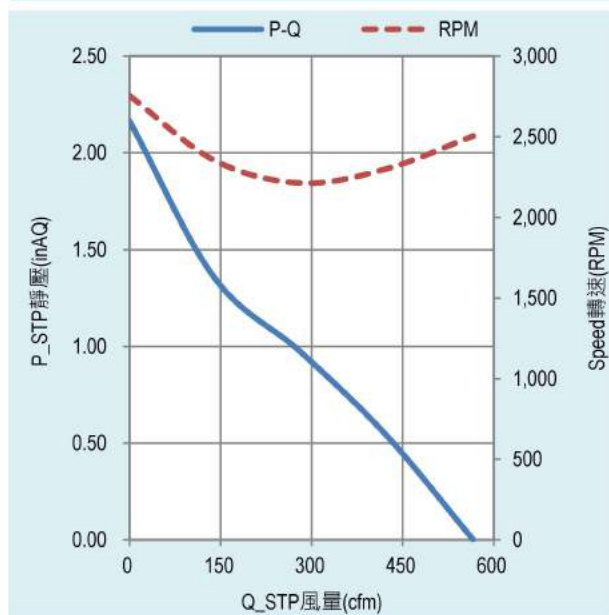
The fan air inlet guide entering depth is 2mm and illustrated in page 20
 於第 20 頁圖示入風圈進入扇葉入風口深度為 2mm



Technical parameters 規格參數

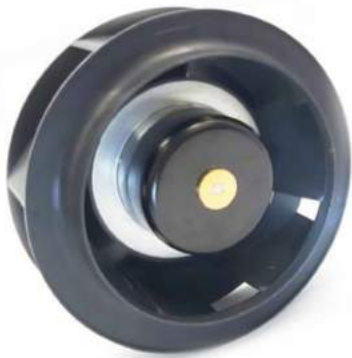
Model name 機型編碼	GE222563HBL-7A2
Rated voltage 額定電壓(VAC)	230
Frequency 交流電頻率(Hz)	50/60
Current 電流(A)	0.67
Speed 轉速(RPM)	2,500
Power 功耗(W)	70
Max. airflow 最大風量(cfm)	566
Max. airflow 最大風量(m ³ /h)	962
Max. static pressure 最大靜壓(inAQ)	2.17
Max. static pressure 最大靜壓(Pa)	542
Noise 噪音(dBA)	66.1
Operating temperature 操作溫度(°C)	-25~60
Weight 重量(g)	1,450
Connection diagram 接線示意	Type I

Performance curves 性能曲線



EC Centrifugal fans 離心扇

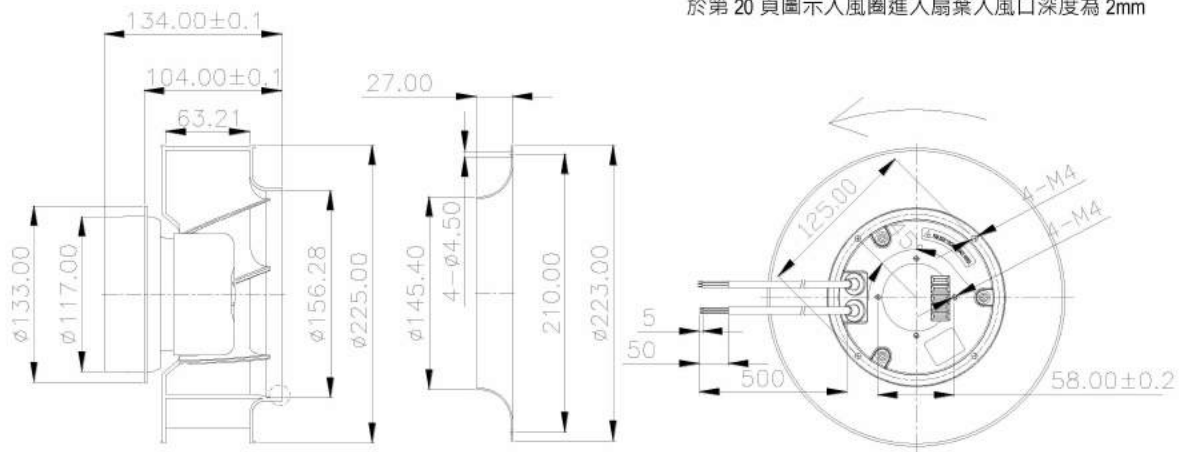
backward curved 後傾式, $\phi 225$



- **Material 材料:**
 Impeller 扇葉: Glass fiber-reinforced polypropylene 玻纖強化聚丙烯
 Electronics housing 後蓋: Die-casting aluminum 壓鑄鋁合金
 Motor shell 馬達殼: Steel, electro deposited black 電著黑鋼材
- **Direction of rotation 轉動方向:** CW view toward rotor 看自入風口為順時針
- **Number of blades 葉片數:** 7
- **Degree of protection 防水防塵等級:** IP65
- **Mode of operating 操作模式:** Continuous operation S1 連續操作 S1
- **Insulation class 絕緣等級:** B
- **Installation position 安裝方向:** Any 任何

Outline dimension 外觀尺寸

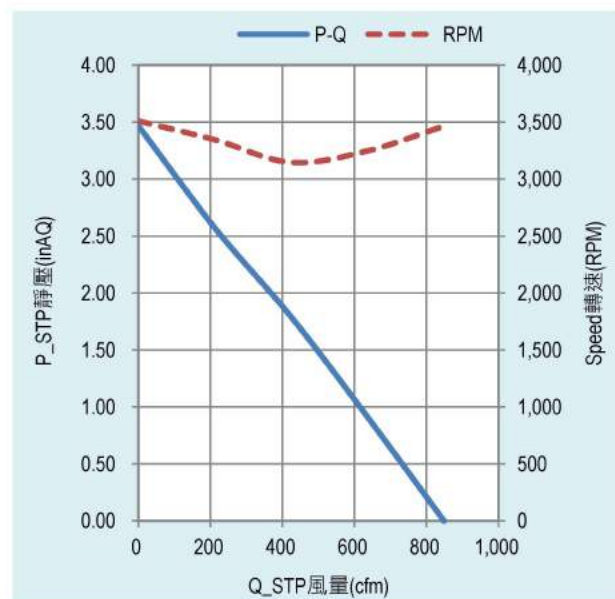
The fan air inlet guide entering depth is 2mm and illustrated in page 20
 於第 20 頁圖示入風圈進入扇葉入風口深度為 2mm



Technical parameters 規格參數

Model name 機型編碼	GE222563HBL-9A2
Rated voltage 額定電壓(VAC)	230
Frequency 交流電頻率(Hz)	50/60
Current 電流(A)	0.67
Speed 轉速(RPM)	3,100
Power 功耗(W)	158
Max. airflow 最大風量(cfm)	849
Max. airflow 最大風量(m ³ /h)	1,443
Max. static pressure 最大靜壓(inAQ)	3.47
Max. static pressure 最大靜壓(Pa)	866
Noise 噪音(dBA)	72.5
Operating temperature 操作溫度(°C)	-25~60
Weight 重量(g)	1,925
Connection diagram 接線示意	Type I

Performance curves 性能曲線



EC Centrifugal fans 離心扇

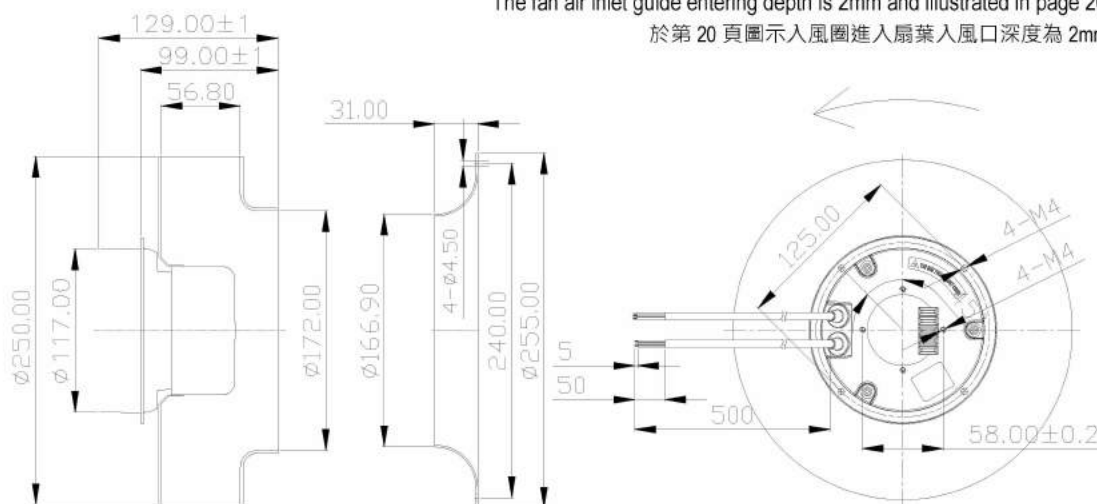
backward curved 後傾式, $\phi 250$



- **Material 材料:**
 Impeller 扇葉: Glass fiber-reinforced polypropylene 玻纖強化聚丙烯
 Electronics housing 後蓋: Die-casting aluminum 壓鑄鋁合金
 Motor shell 馬達殼: Steel, electro deposited black 電著黑鋼材
- **Direction of rotation 轉動方向:** CW view toward rotor 看自入風口為順時針
- **Number of blades 葉片數:** 7
- **Degree of protection 防水防塵等級:** IP65
- **Mode of operating 操作模式:** Continuous operation S1 連續操作 S1
- **Insulation class 絕緣等級:** B
- **Installation position 安裝方向:** Any 任何

Outline dimension 外觀尺寸

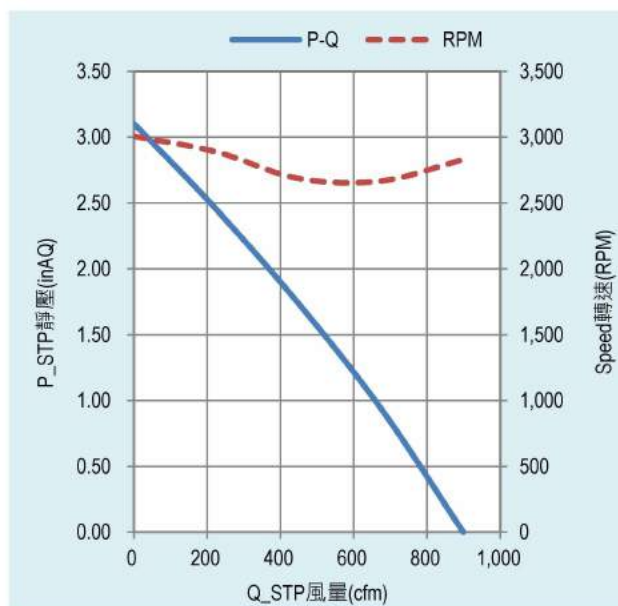
The fan air inlet guide entering depth is 2mm and illustrated in page 20
 於第 20 頁圖示入風圈進入扇葉入風口深度為 2mm



Technical parameters 規格參數

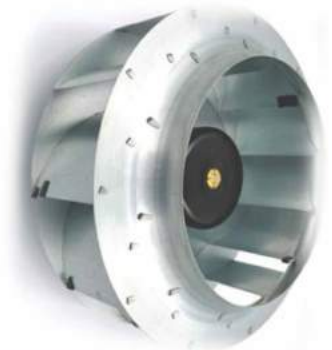
Model name 機型編碼	GE225057MBL-9A2
Rated voltage 額定電壓(VAC)	230
Frequency 交流電頻率(Hz)	50/60
Current 電流(A)	1.35
Speed 轉速(RPM)	2,500
Power 功耗(W)	155
Max. airflow 最大風量(cfm)	901
Max. airflow 最大風量(m ³ /h)	1,531
Max. static pressure 最大靜壓(inAQ)	2.45
Max. static pressure 最大靜壓(Pa)	613
Noise 噪音(dBA)	70.5
Operating temperature 操作溫度(°C)	-25~60
Weight 重量(g)	2,000
Connection diagram 接線示意	Type I

Performance curves 性能曲線



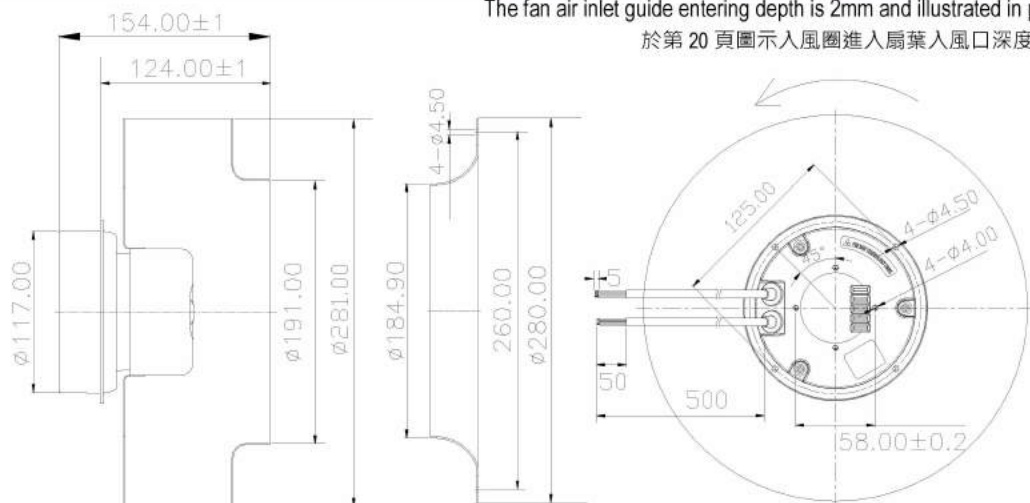
EC Centrifugal fans 離心扇

backward curved 後傾式, $\phi 280$



- **Material 材料:**
 Impeller 扇葉: Hot-dip galvanized sheet steel (SGCC) 熱浸鍍鋅鋼板
 Electronics housing 後蓋: Die-casting aluminum 壓鑄鋁合金
 Motor shell 馬達殼: Steel, electro deposited black 電著黑鋼材
- **Direction of rotation 轉動方向:** CW view toward rotor 看自入風口為順時針
- **Number of blades 葉片數:** 7
- **Degree of protection 防水防塵等級:** IP65
- **Mode of operating 操作模式:** Continuous operation S1 連續操作 S1
- **Insulation class 絕緣等級:** B
- **Installation position 安裝方向:** Any 任何

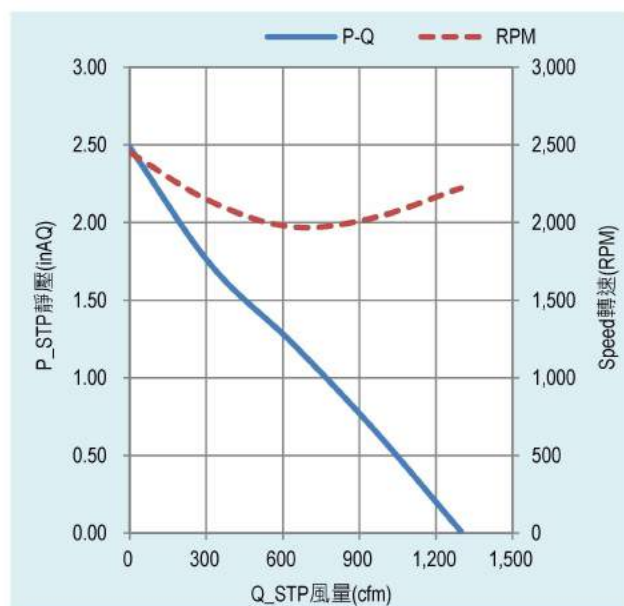
Outline dimension 外觀尺寸



Technical parameters 規格參數

Model name 機型編碼	GE228080MBL-9A2
Rated voltage 額定電壓(VAC)	230
Frequency 交流電頻率(Hz)	50/60
Current 電流(A)	1.4
Speed 轉速(RPM)	2,100
Power 功耗(W)	160
Max. airflow 最大風量(cfm)	1,322
Max. airflow 最大風量(m ³ /h)	2,248
Max. static pressure 最大靜壓(inAQ)	2.49
Max. static pressure 最大靜壓(Pa)	622
Noise 噪音(dBA)	71.5
Operating temperature 操作溫度(°C)	-25~60
Weight 重量(g)	2,658
Connection diagram 接線示意	Type I

Performance curves 性能曲線



EC Centrifugal fans 離心扇

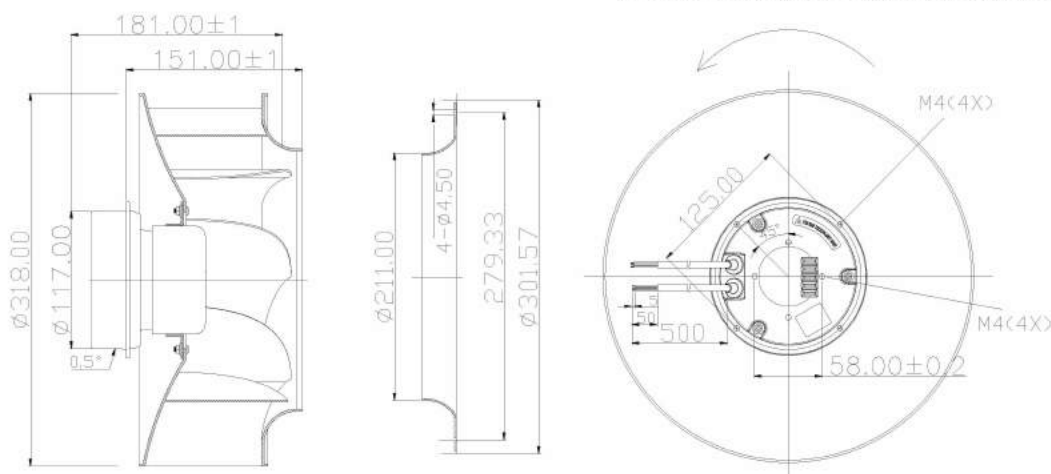
backward curved 後傾式, $\phi 310$



- **Material 材料:**
 Impeller 扇葉: Aluminum alloy 鋁合金
 Electronics housing 後蓋: Die-casting aluminum 壓鑄鋁合金
 Motor shell 馬達殼: Steel, electro deposited black 電著黑鋼材
- **Direction of rotation 轉動方向:** CW view toward rotor 看自入風口為順時針
- **Number of blades 葉片數:** 7
- **Degree of protection 防水防塵等級:** IP65
- **Mode of operating 操作模式:** Continuous operation S1 連續操作 S1
- **Insulation class 絕緣等級:** B
- **Installation position 安裝方向:** Any 任何

Outline dimension 外觀尺寸

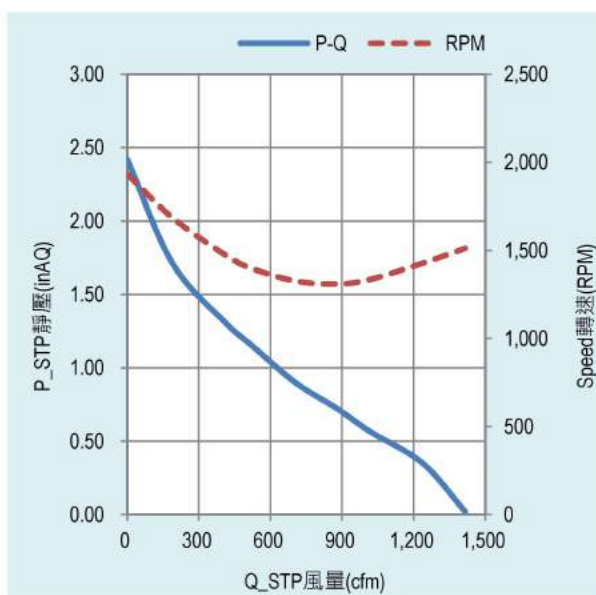
The fan air inlet guide entering depth is 2mm and illustrated in page 20
 於第 20 頁圖示入風圈進入扇葉入風口深度為 2mm



Technical parameters 規格參數

Model name 機型編碼	GE2310A0MBL-9A2
Rated voltage 額定電壓(VAC)	230
Frequency 交流電頻率(Hz)	50/60
Current 電流(A)	1.25
Speed 轉速(RPM)	1,500
Power 功耗(W)	140
Max. airflow 最大風量(cfm)	1,416
Max. airflow 最大風量(m ³ /h)	2,407
Max. static pressure 最大靜壓(inAQ)	2.42
Max. static pressure 最大靜壓(Pa)	604
Noise 噪音(dBA)	66
Operating temperature 操作溫度(°C)	-25~60
Weight 重量(g)	2,835
Connection diagram 接線示意	Type I

Performance curves 性能曲線



EC Forward Centrifugal Fans



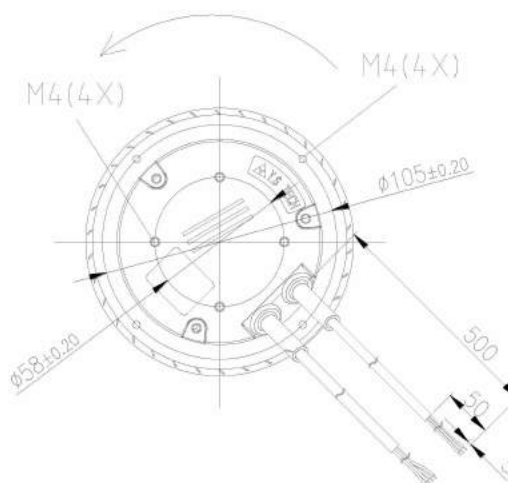
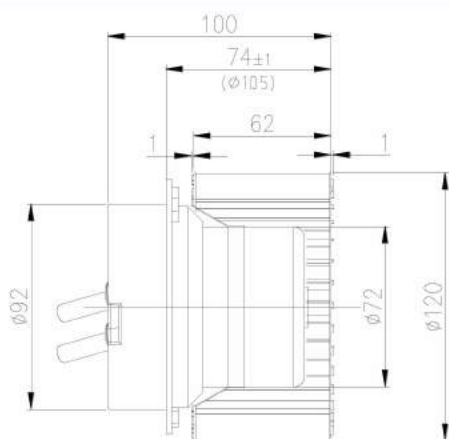
EC Centrifugal fans 離心扇

forward curved 前傾式, $\phi 120$



- **Material 材料:**
 Impeller 扇葉: Hot-dip galvanized sheet steel (SGCC) 熱浸鍍鋅鋼板
 Electronics housing 後蓋: Die-casting aluminum 壓鑄鋁合金
 Motor shell 馬達殼: Steel, electro deposited black 電著黑鋼材
- **Direction of rotation 轉動方向:** CW view toward rotor 看自入風口為順時針
- **Number of blades 葉片數:** 34
- **Degree of protection 防水防塵等級:** IP65
- **Mode of operating 操作模式:** Continuous operation S1 連續操作 S1
- **Insulation class 絕緣等級:** B
- **Installation position 安裝方向:** Any 任何

Outline dimension 外觀尺寸

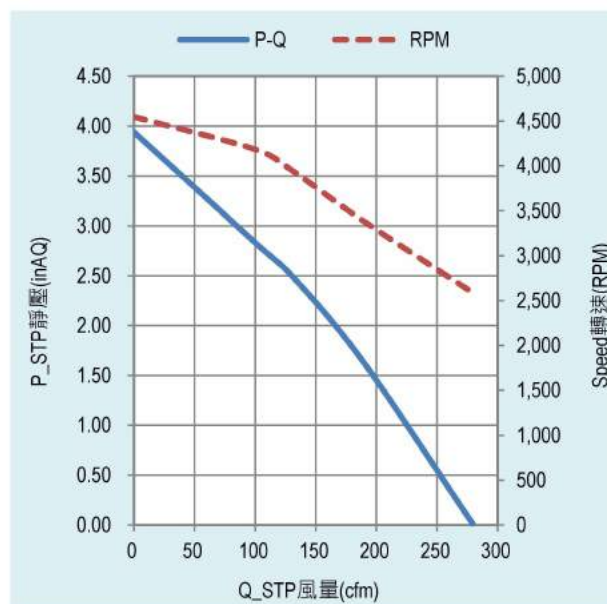


PQ 曲線為風扇入渦殼量測所得
 PQ curve was measured with scroll housing

Technical parameters 規格參數

Model name 機型編碼	GE212061HBL-7A2
Rated voltage 額定電壓(VAC)	230
Frequency 交流電頻率(Hz)	50/60
Current 電流(A)	0.95
Speed 轉速(RPM)	3,860
Power 功耗(W)	108
Max. airflow 最大風量(cfm)	279
Max. airflow 最大風量(m ³ /h)	475
Max. static pressure 最大靜壓(inAQ)	3.94
Max. static pressure 最大靜壓(Pa)	984
Noise 噪音(dBA)	67.2
Operating temperature 操作溫度(°C)	-25~60
Weight 重量(g)	1,206
Connection diagram 接線示意	Type I

Performance curves 性能曲線



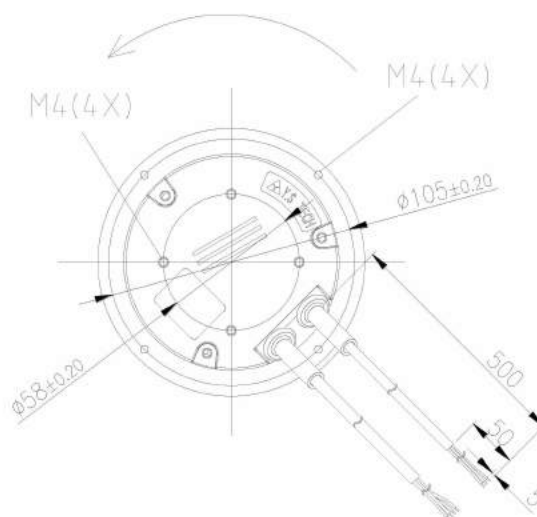
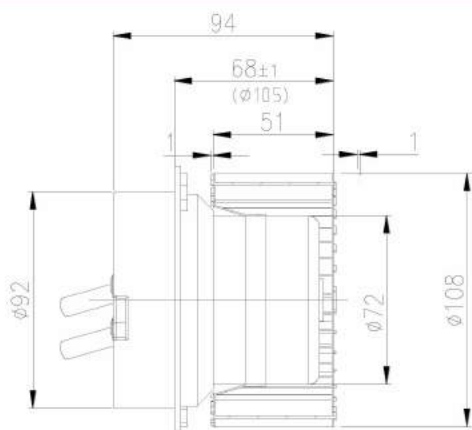
EC Centrifugal fans 離心扇

forward curved 前傾式, $\phi 108$



- **Material 材料:**
 Impeller 扇葉: Hot-dip galvanized sheet steel (SGCC) 熱浸鍍鋅鋼板
 Electronics housing 後蓋: Die-casting aluminum 壓鑄鋁合金
 Motor shell 馬達殼: Steel, electro deposited black 電著黑鋼材
- **Direction of rotation 轉動方向:** CW view toward rotor 看自入風口為順時針
- **Number of blades 葉片數:** 34
- **Degree of protection 防水防塵等級:** IP65
- **Mode of operating 操作模式:** Continuous operation S1 連續操作 S1
- **Insulation class 絕緣等級:** B
- **Installation position 安裝方向:** Any 任何

Outline dimension 外觀尺寸

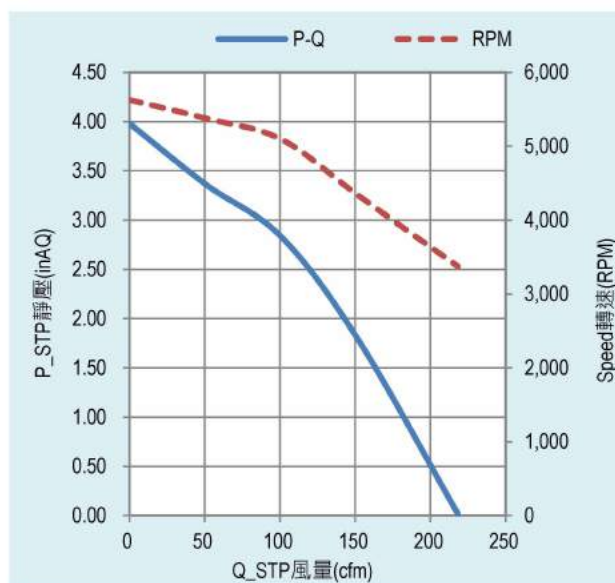


PQ 曲線為風扇入蝸殼量測所得
 PQ curve was measured with scroll housing

Technical parameters 規格參數

Model name 機型編碼	GE210851HBL-7A2
Rated voltage 額定電壓(VAC)	230
Frequency 交流電頻率(Hz)	50/60
Current 電流(A)	0.96
Speed 轉速(RPM)	5,120
Power 功耗(W)	108
Max. airflow 最大風量(cfm)	218
Max. airflow 最大風量(m ³ /h)	371
Max. static pressure 最大靜壓(inAQ)	3.98
Max. static pressure 最大靜壓(Pa)	994
Noise 噪音(dBA)	71.1
Operating temperature 操作溫度(°C)	-25~60
Weight 重量(g)	1,187
Connection diagram 接線示意	Type I

Performance curves 性能曲線



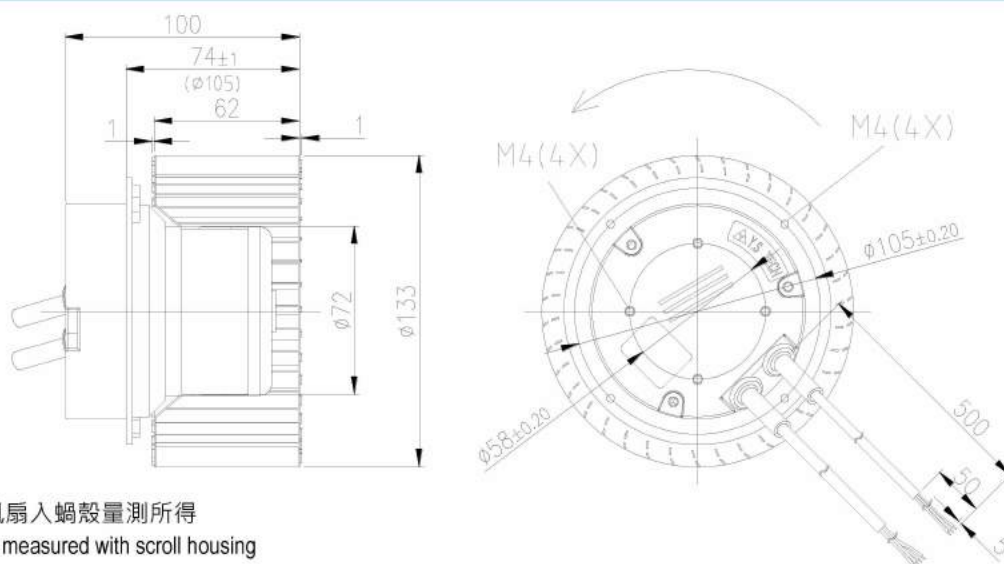
EC Centrifugal fans 離心扇

forward curved 前傾式, $\phi 133$



- **Material 材料:**
 Impeller 扇葉: Hot-dip galvanized sheet steel (SGCC) 熱浸鍍鋅鋼板
 Electronics housing 後蓋: Die-casting aluminum 壓鑄鋁合金
 Motor shell 馬達殼: Steel, electro deposited black 電著黑鋼材
- **Direction of rotation 轉動方向:** CW view toward rotor 看自入風口為順時針
- **Number of blades 葉片數:** 38
- **Degree of protection 防水防塵等級:** IP65
- **Mode of operating 操作模式:** Continuous operation S1 連續操作 S1
- **Insulation class 絕緣等級:** B
- **Installation position 安裝方向:** Any 任何

Outline dimension 外觀尺寸

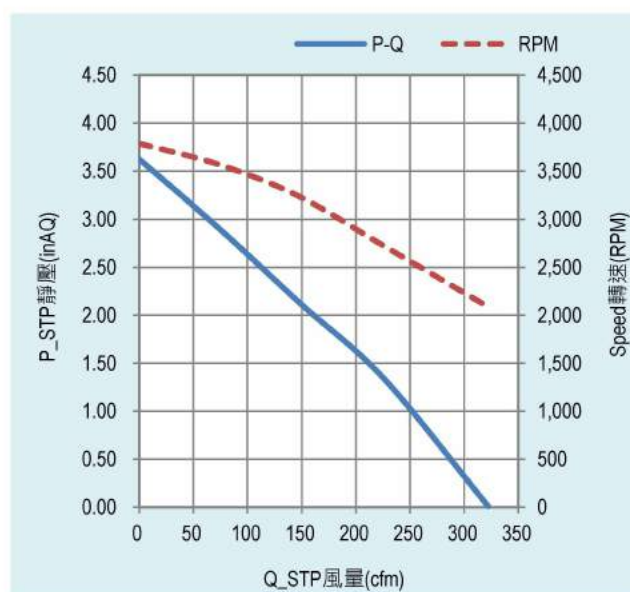


PQ 曲線為風扇入渦殼量測所得
 PQ curve was measured with scroll housing

Technical parameters 規格參數

Model name 機型編碼	GE213362HBL-7A2
Rated voltage 額定電壓(VAC)	230
Frequency 交流電頻率(Hz)	50/60
Current 電流(A)	0.94
Speed 轉速(RPM)	3,180
Power 功耗(W)	106
Max. airflow 最大風量(cfm)	322
Max. airflow 最大風量(m ³ /h)	548
Max. static pressure 最大靜壓(inAQ)	3.62
Max. static pressure 最大靜壓(Pa)	906
Noise 噪音(dBA)	66
Operating temperature 操作溫度(°C)	-25~60
Weight 重量(g)	1,227
Connection diagram 接線示意	Type I

Performance curves 性能曲線



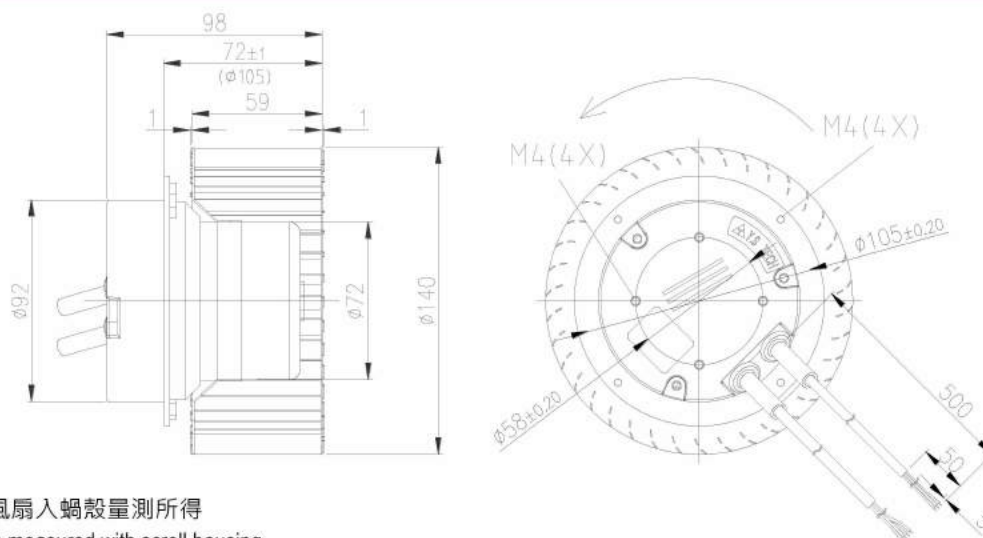
EC Centrifugal fans 離心扇

forward curved 前傾式, $\phi 140$



- **Material 材料:**
 Impeller 扇葉: Hot-dip galvanized sheet steel (SGCC) 熱浸鍍鋅鋼板
 Electronics housing 後蓋: Die-casting aluminum 壓鑄鋁合金
 Motor shell 馬達殼: Steel, electro deposited black 電著黑鋼材
- **Direction of rotation 轉動方向:** CW view toward rotor 看自入風口為順時針
- **Number of blades 葉片數:** 38
- **Degree of protection 防水防塵等級:** IP65
- **Mode of operating 操作模式:** Continuous operation S1 連續操作 S1
- **Insulation class 絕緣等級:** B
- **Installation position 安裝方向:** Any 任何

Outline dimension 規格參數

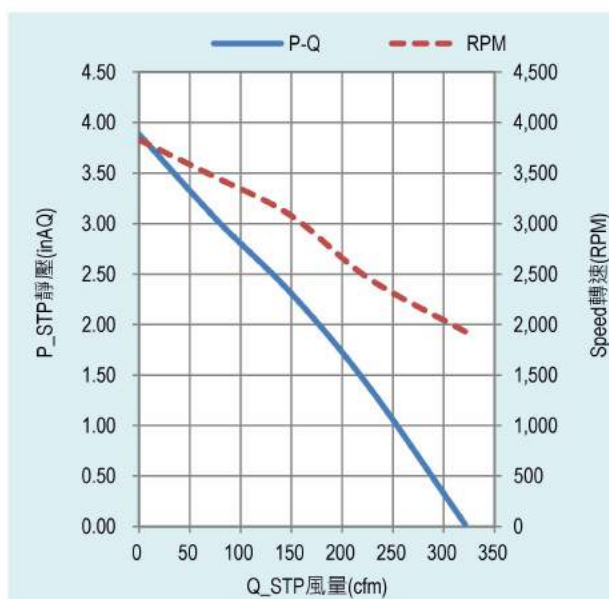


PQ 曲線為風扇入渦殼量測所得
 PQ curve was measured with scroll housing

Technical parameters 規格參數

Model name 機型編碼	GE214059HBL-7A2
Rated voltage 額定電壓(VAC)	230
Frequency 交流電頻率(Hz)	50/60
Current 電流(A)	0.97
Speed 轉速(RPM)	3,100
Power 功耗(W)	109
Max. airflow 最大風量(cfm)	321
Max. airflow 最大風量(m ³ /h)	546
Max. static pressure 最大靜壓(inAQ)	3.89
Max. static pressure 最大靜壓(Pa)	971
Noise 噪音(dBA)	63.88
Operating temperature 操作溫度(°C)	-25~60
Weight 重量(g)	1,241
Connection diagram 接線示意	Type I

Performance curves 性能曲線



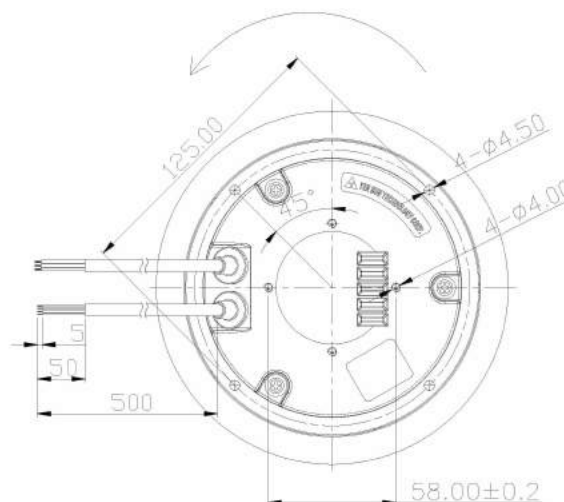
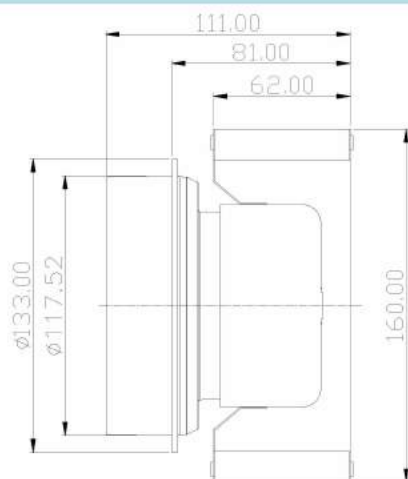
EC Centrifugal fans 離心扇

forward curved 前傾式, $\phi 160$



- **Material 材料:**
 Impeller 扇葉: Hot-dip galvanized sheet steel (SGCC) 熱浸鍍鋅鋼板
 Electronics housing 後蓋: Die-casting aluminum 壓鑄鋁合金
 Motor shell 馬達殼: Steel, electro deposited black 電鍍黑鋼材
- **Direction of rotation 轉動方向:** CW view toward rotor 看自入風口為順時針
- **Number of blades 葉片數:** 38
- **Degree of protection 防水防塵等級:** IP65
- **Mode of operating 操作模式:** Continuous operation S1 連續操作 S1
- **Insulation class 絕緣等級:** B
- **Installation position 安裝方向:** Any 任何

Outline dimension 外觀尺寸

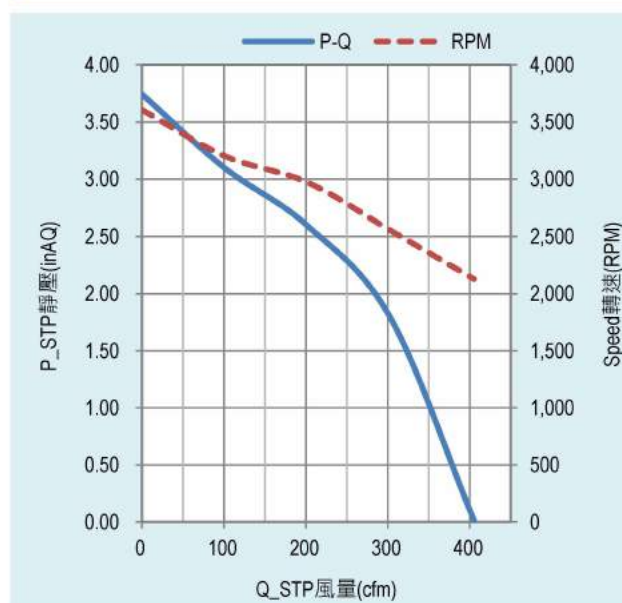


PQ 曲線為風扇入蝸殼量測所得
 PQ curve was measured with scroll housing

Technical parameters 規格參數

Model name 機型編碼	GE216062HBL-9A2
Rated voltage 額定電壓(VAC)	230
Frequency 交流電頻率(Hz)	50/60
Current 電流(A)	1.74
Speed 轉速(RPM)	2,150
Power 功耗(W)	195
Max. airflow 最大風量(cfm)	405
Max. airflow 最大風量(m ³ /h)	690
Max. static pressure 最大靜壓(inAQ)	3.74
Max. static pressure 最大靜壓(Pa)	936
Noise 噪音(dBA)	60.9
Operating temperature 操作溫度(°C)	-25~60
Weight 重量(g)	1,820
Connection diagram 接線示意	Type I

Performance curves 性能曲線



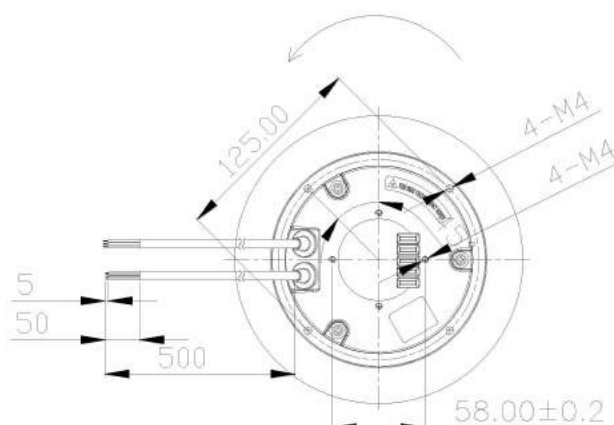
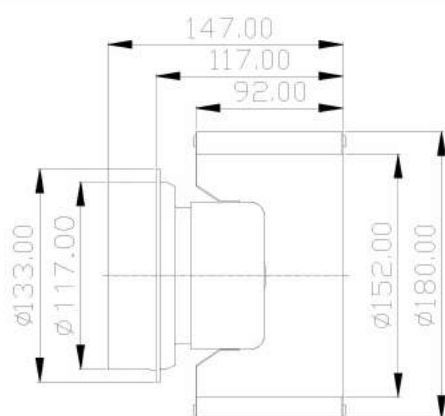
EC Centrifugal fans 離心扇

forward curved 前傾式, $\phi 180$



- **Material 材料:**
 Impeller 扇葉: Hot-dip galvanized sheet steel (SGCC) 熱浸鍍鋅鋼板
 Electronics housing 後蓋: Die-casting aluminum 壓鑄鋁合金
 Motor shell 馬達殼: Steel, electro deposited black 電著黑鋼材
- **Direction of rotation 轉動方向:** CW view toward rotor 看自入風口為順時針
- **Number of blades 葉片數:** 38
- **Degree of protection 防水防塵等級:** IP65
- **Mode of operating 操作模式:** Continuous operation S1 連續操作 S1
- **Insulation class 絕緣等級:** B
- **Installation position 安裝方向:** Any 任何

Outline dimension 外觀尺寸



PQ 曲線為風扇入渦殼量測所得
 PQ curve was measured with scroll housing

Technical parameters 規格參數

Model name 機型編碼	GE218092HBL-9A2
Rated voltage 額定電壓(VAC)	230
Frequency 交流電頻率(Hz)	50/60
Current 電流(A)	1.55
Speed 轉速(RPM)	1,200
Power 功耗(W)	180
Max. airflow 最大風量(cfm)	616
Max. airflow 最大風量(m ³ /h)	1,046
Max. static pressure 最大靜壓(inAQ)	3.2
Max. static pressure 最大靜壓(Pa)	800
Noise 噪音(dBA)	51.2
Operating temperature 操作溫度(°C)	-25~60
Weight 重量(g)	1,900
Connection diagram 接線示意	Type I

Performance curves 性能曲線

